



LOT 111 WIPEOUT DRIVE, OCEAN GROVE, VIC 3226  
**OCEAN GRAND ESTATE**  
**ALBERT 22 - HAVEN FACADE**

**COMPLETE FIXED PRICE \$888,080**

LAND DIMENSIONS: 16.59M (W) x 32M (L)  
 LAND SIZE: 532M2  
 BLOCK TYPE: REGULAR  
 HOME SIZE: 202M2 / 22 SQ  
 TITLED/ESTIMATED TITLE DATE: TITLED  
 ORIENTATION: NORTH



LAND CONTRACT: \$518,900  
 BUILD CONTRACT: \$369,180  
 ESTATE GUIDELINES: INCLUDED  
**PRICE VALID UNTIL: 31/MAR/2026**

### EVO COMPLETE COLLECTION

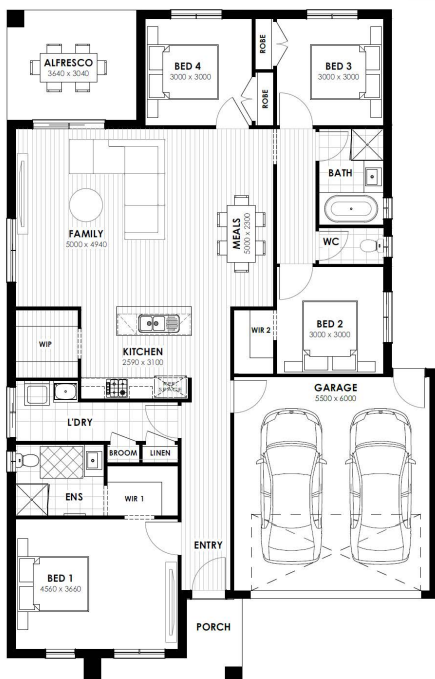
**Lux Kitchen Pack**  
 - 20mm polished edge Asphaltic Concrete stone benchtops to kitchen, ensuite, bathroom & laundry from StoneArt Waterfall end to kitchen island benchtop  
 - WIP and butlers pantry (Design specific)  
 - Soft-close cabinetry throughout kitchen and bathrooms – R+R Cabinets  
 - Technica Appliance Pack including cooktop, canopy rangehood, oven and dishwasher in chrome or black finish

**Lux Electrical Pack**  
 - LED downlights to all internal rooms and porch  
 - Reverse-cycled split system to family room as per Manufacturers specifications  
 - Data Package (Fibre Optic- NBN ready)  
 - Slimline light switches

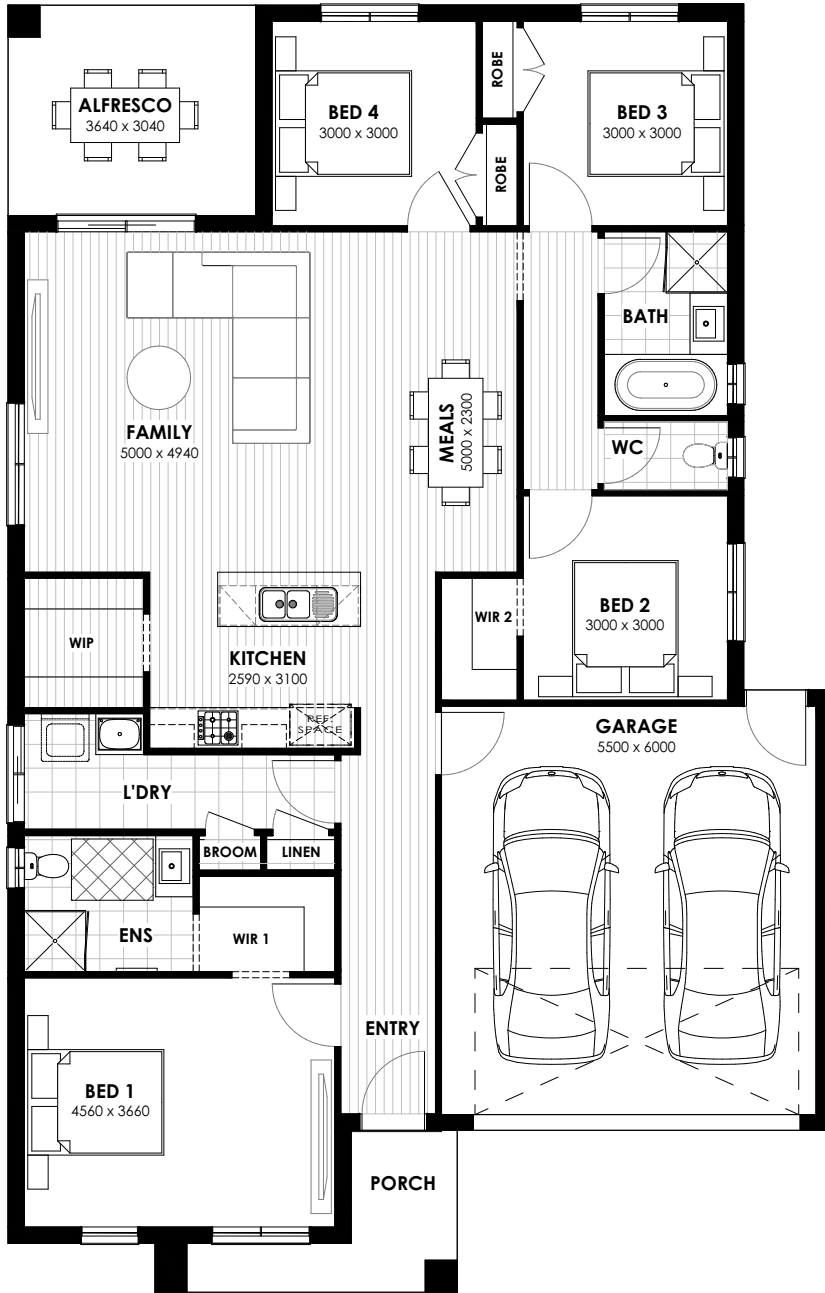
**Lux External Pack (Ready to move in)**  
 - Landscape Design  
 - External coloured concrete driveway  
 - Fencing as per estate's specifications  
 - Fold down clothes line and letter box  
 - Brick infills above all windows & garage door

**Lux Finishes**  
 - Upgrade floor coverings - 12mm laminate flooring, 10mm carpet underlay with 220Z carpet  
 - Three-coat paint system  
 - Freestanding bath (as per design)  
 - Blinds & flyscreens to all windows  
 - Flydoor to rear sliding door  
 - 2590mm ceilings

**Peace of Mind Pack**  
 - Fixed Site Costs including P-Class Slab & Piers  
 - Peace of Mind Rock Extraction & Removal Guarantee  
 - 7-Star Energy & NCC compliant  
 - Developer Guidelines INCL Eaves, Water Tank, Recycled Water & Corner Treatment (where required)  
 - Community Infrastructure Levy - CIL (where applicable)  
 - BAL1 2.5 Bushfire Compliant (where applicable)



Disclaimer: The builder reserves the right to amend specification and price without notice. All plans and facades are indicative concepts and are not intended to be an actual depiction of the building. Fencing, paths, garage, driveway or landscaping are for illustration purposes only. All dimensions are approximate, refer to contract documentation for details. The First Home Owners Grant is a government incentive and is subject to change.



## ALBERT 22

4 | 
 2 | 
 1 | 
 2

**Minimum Lot Width:** 14.00m  
**Minimum Lot Depth:** 25.00m  
**Home Width:** 12.11m  
**Home length:** 18.91m

### AREA SUMMARY (m<sup>2</sup>)

FLOOR AREA	m <sup>2</sup>
GROUND FLOOR	148.05
GARAGE	36.17
ALFRESCO	11.25
PORCH	5.79
<b>TOTAL BUILDING AREA</b>	<b>201.26 m<sup>2</sup></b>



# EVO HOMES

VICTORIA

**COPYRIGHT:** This document and its contents are the exclusive property of EVO Homes Victoria. No part of this work may be reproduced, copied, or transmitted in any form or by any means without written permission from EVO Homes Victoria. Dimensions may vary slightly depending on the selected façade and floorplan. Minimum lot sizes are subject to Council requirements and Estate Guidelines. This document is for illustrative purposes only and should be used as a general guide. Illustrations are not to scale. All room dimensions are internal measurements taken to the framework. Refer to the final working drawings for accurate details. Furniture shown is for presentation purposes only and not included.

# QUALITY INCLUSIONS

## CEILING

---

2590mm Ceiling Height throughout to interior of the home

## KITCHEN APPLIANCES

---

### Oven

Stainless steel 600mm fan forced oven.

### Rangehood

Stainless steel 600mm wide canopy rangehood.

### Sink

Stainless steel double bowl sink.

### Cooktop

Stainless steel 600mm gas cooktop with wok burner.

### Dishwasher

Stainless Steel 600mm Dishwasher

## KITCHEN

---

### Cabinets

Soft Close Fully lined melamine modular cabinets including overhead cupboards as per plan (including above Refrigerator Space)

### Microwave Provision

Standard laminate including single power point and pot drawers below (plan specific)

### Handles

Selected from builder's quality colour boards.

### Taps

Designer Chrome Gooseneck mixer tapware.

### Splashback

Tiled Splashback as per plan – 75mm x 300mm

### Hamper (Bulkhead)

Hamper above Walk-in-Pantry entry

### Pantry

4 x white melamine shelves.

### Fridge Provision

Laminate or plastered including single power point (plan specific).

### Doors/Drawers

Laminate from builder's quality colour boards.

### Kitchen Bench Top

20mm Stone Benchtops

### Waterfall End

20mm Stone Waterfall End (1 x) to Kitchen Benchtop (plan specific)



## BATHROOM CABINETRY

---

### Cabinets

Soft Close Fully lined melamine modular cabinets as per plan.

### Vanity Bench Top

20mm Stone Benchtops

### Doors/Drawers

Soft Close Laminate from builder's quality colour boards.

### Handles

Selected from builder's quality colour boards.

## BATHROOM & ENSUITE

---

### Basins

Vitreous china vanity basin (white).

### Mirrors

1150mm high polished edge mirror to full width of vanity.

### Shower Screens

Semi framed 2000mm shower screens with powder coated aluminium frame (polished silver finish) and clear glazed pivot door.

### Shower Bases

Recessed Tiled shower bases with waterproof system throughout.

### Shower Outlet

Handheld shower, rail and slider in chrome finish to ensuite and bathroom.

### Hamper (Bulkhead)

Hamper above Ensuities & Walk-in-Robes entries



### Bath

1500mm freestanding bath (plan specific)

### Accessories

600mm single towel rail and toilet roll holder in chrome finish.

### Taps

Chrome mixer tapware.

### Exhaust Fans

250mm exhaust fans including self sealing air flow draft stoppers.

### Toilet Suite

Vitreous china, close coupled toilet suite with soft close top.

### Privacy Locks

Privacy Locks to all Bathrooms & WCs

## LAUNDRY

---

### Cabinet

700mm laundry cabinet with 20mm Stone Benchtop from builder's quality colour boards, with 45 Litres Stainless Steel trough.

### Washing Machine Provision

Washing machine provision under Laundry Laminated Benchtop with chrome washing machine stops and powerpoint

### Tap

Flickmaster tap, chrome finish.



## STORAGE

---

### Robe Shelving

1 x white melamine shelf with hanging rail.

### Broom & Linen Shelving

1 x white melamine shelf with 2040mm high hinged door.

### Robe Doors

2040mm high sliding doors as per plan.

### Walk-In Robe (design specific)

1 x white melamine shelf with hanging rail.

### Handles

Handles in polished chrome finish.

### Linen

2040mm high hinged door(s) as per plan where space permits. Four white melamine shelves.

## CERAMIC TILING

---

### Wall Tiles

Wall tiles to kitchen, bathroom, ensuite and laundry where shown on plans. Tile selection as per builder's quality colour boards.

### Floor Tiles

Floor tiles to ensuite, bathroom, laundry and WC. selection as per builder's quality colour boards.

### Skirting Tiles

Skirting Tiles to Bathroom, Ensuite, Laundry & WC

### Feature Tiles

Feature 100mm x 300mm splashback wall tiles to kitchen, bathroom, ensuite and laundry where shown on plans. Tile selection as per builder's quality colour boards.



## FLOOR COVERINGS

---

### Carpet

Quality Carpet 22/OZ with Sprintread Ultimate 10mm underlay to all Bedrooms, Lounges & Study. Selections as per builder's quality colour boards and as shown on plan.

### Carpet (double storey)

Quality Carpet 22/OZ with Sprintread Ultimate 10mm underlay to all upper floor areas including stairs (excluding wet areas). Selections as per builders quality colour boards and as shown on plan.

### Laminate Flooring

Quality Laminate 12mm flooring to Entry, Kitchen, Meals, Family Areas and Passageways as shown on plan. Selection as per builder's quality colour boards.

## INTERNAL FEATURES

---

### Doors

2040mm high hinged or sliding doors as per plan.

### Door Stops

White door stops to hinged doors, where applicable.

### Mouldings

67mm x 18mm Beveled MDF skirting & 42mm x 18mm MDF beveled architraves.

### Door Furniture

Lever door furniture in polished chrome finish to all rooms.

### Door Seals

Door seals to nominated internal doors.

*Note: This will be in accordance with energy rating report.*

## PLASTERWORK

---

10mm plasterboard to ceiling and wall, water resistant plaster to ensuite, bathroom, above laundry benchtop, 75mm cove cornice throughout.

## PAINT – 3 COAT APPLICATION TO ALL OPEN AREAS

---

### Timberwork

Semi-Gloss enamel paint to internal doors, jambs & mouldings.

### Internal Walls

Washable low sheen acrylic paint to internal walls.

### Entry Door

Semi-Gloss enamel paint to front entry door.

### Ceilings

Flat acrylic paint to ceilings.

### Colours

Paint colours selected as per builder's quality colour boards.

## STAIRCASE (DOUBLE STOREY HOMES)

---

Pine closed stringers, with MDF treads and risers with carpet cover. Feature Pine Handrail above plastered Dwarf Wall balustrade.

## INSULATION

---

### External Brickwork

Glasswool wall batts including sisalation to external brick veneer walls (excluding garage) and wall between garage and house as required to meet 7 star energy rating.

### Ceiling

Ceiling insulation as required to meet 7 Star energy rating.

Note: Excludes double glazed, low E glazed, insulation batts between floor joists on Double Storey designs.

## ELECTRICAL

---

### Internal Light Points

100mm diameter 240V LED downlights fittings (colour – white) throughout as per floorplan specific electrical layout (supply/install light globes to all light fittings in the home).

### External Lights

100mm diameter fixed 240V white recessed downlight to front entry and alfresco where applicable. Weather proof Para flood light to front of garage (1 x) and to rear (1 x) as per electrical plan.

### Power Point

Double power points to all Bedrooms and Living areas. Single power points to dishwasher, microwave and refrigerator locations (refer to electrical plan).

### TV Points

2 x TV points (1 x to Master Bedroom and 1 x to living area).

### Data Points

2 x Data Points (as per plan)

### NBN / Fibre Optics

NBN provision infrastructure on garage wall

### Telephone Point

2 x pre-wired telephone points to kitchen & Master Bedroom with wall plate as per plan

### Switch Plates

White wall mounted switches.

### Smoke Detector(s)

Hardwired Smoke Detectors with battery backup as per plan

### Safety Switches

RCD safety switch and circuit breaker switches to meter box.

## HEATING

---

Gas ducted heating to all bedrooms and living areas. Total number of points and unit size are product specific.

## FRAMING

---

Engineered pine wall frame and roof trusses.

## GARAGE

---

### General

Garage with concrete tiled roof including Colorbond® sectional overhead door, plaster ceiling and concrete floor.

### Infill Over Garage Door

Brick infill over sectional garage door

### Remote Controls

2 x handheld remote controls & wall mount

### External Door to Rear

Weatherproof flush panel door, low sheen acrylic paint finish (design specific).

### External Walls

Brick veneer (on boundary wall or product specific if required).

### External Door Frame

Aluminium powder coat finish.



### External Door Furniture

Entrance lockset.

### Internal Access Door to Home from Garage

2040mm x 920mm high hinged step-free door, low sheen acrylic paint finish. (design specific).

## SOLAR PANELS

---

3.5kW Solar Panel system to achieve 7-Star Energy rating.

## PLUMBING

---

2 x External Taps – 1 x external tap to front water meter and 1 x external tap next to laundry exit.

## HOT WATER SYSTEM (ESTATE SPECIFIC)

---

### Heat Pump System

Air-water heat pump system with 170 litre storage tank, and continuous mains pressure 20 litre gas booster.

### Or Gas Continuous Flow System

Gas continuous flow water heater system (up to 27 sq.'s = 20 L/M Unit & 28 sq.'s and above = 26 L/M unit).

*Note: Continuous flow water heater will be used in estates where recycled water or water tank is available. In lieu of heat pump system.*

## 7 STAR ENERGY

---

Minimum 7 star energy rating for house plans and all facades on any orientation.

## EXTERNAL FEATURES

---

### Bricks

PGH Brick selection from builders' quality colour boards to single storey homes and ground floor of double storey homes.

### Light Weight Cladding

Rendered lightweight finish to first floor of double storey homes. Finish and colour to be selected from builder's quality colour boards (design specific – refer to working drawings for extent of cover).

### Front Elevations

As per Working Drawings. Acrylic render to selected areas as per plan.

### Eaves

450mm Eaves to Front Facade with up to 3m return (where required by Estate Guidelines)

### Hebel Product

Rendered Hebel panels to facades (where required). Finish and colour to be selected from builder's quality colour boards (design specific – refer to working drawings for extent of cover).

### Mortar Joints

Face Brickwork – Natural colour rolled joints.

### Balcony Balustrade

Facade specific. (Double Storey plans only)

### Balcony Flooring

Builders range external ceramic tile.

## WINDOWS

---



### Single Storey Windows

Aluminium awning windows to Front Facade. Aluminium sliding windows to all other openable windows. Double glazed windows to front facade where required to meet 7 star energy rating. Key lock to all openable windows

### Infill Over Windows

Brick infill over all windows

### Double Storey Windows

Aluminium awning windows to Front Facade. Aluminium sliding windows to all other openable windows. Double glazed windows to front facade where required to meet 7 star energy rating. Key lock to all openable windows

## EXTERNAL DOORS

---

### Front Entry Door

Feature front door as per facade with clear glass.

### Front Entry Door Furniture

Entrance lockset in polished stainless steel with deadbolt (product specific).

### Door Seal

Door seal and weather seal to all external hinged doors.

### Infill Over Doors

Brick infill over all external doors

### Entry Frame

Aluminium, powder coated finish (product specific).

### External Hinged Door

Entrance lockset in polished stainless steel to external door of garage (plan specific)

### External Family & Laundry Door

Aluminium powder coated sliding door (as per plan)

## ROOFING

---

### Pitch

Roof pitch to be 22.5 degrees.

### Fascia & Guttering

Colorbond® fascia, guttering and downpipes.

### Material

Concrete roof tiles from builder's quality colour boards to meet 7 star energy rating.

## SITE CONDITIONS / FOUNDATION

---

### Foundation Class

Engineer-designed Up to Class H2 pierced concrete slab a maximum of 500mm fall over allotment and up to 200mm of fill. If fill is shown on block, a lot-specific Level 1 Compaction Report is required, or additional charges may apply. Land allotments up to 450m<sup>2</sup>.

### Silt Fence

Supply and hire of environmental silt fence to front of property as required by council.

### Temporary Fencing

Supply and hire of temporary fencing to site as required.

### Rock Extraction & Removal

Rock Extraction and Removal (fully guaranteed). Refer to special conditions of building contract

### Termite Treatment

Termite spray system as required by the relevant authority.

## PRELIMINARY WORKS

---

### Pre-site Inspection

A pre-site inspection will be conducted

### Soil Report & Contour Survey

From our independent Geotechnical Engineers

### Developer Approval

Developer Approval applications (where required)

### Building Permit

Building Permit and associated application fees

### BAL 12.5 (Bushfire Attack Level)

Provided FREE if required

## CONNECTION OF SERVICES

---

### Electricity

Single Phase underground electricity

### Water Mains & Gas Supply

To be provided

### Sewer & Stormwater Connection

To be provided

### Dry Tapping Water Connection

Recycled Water provided FREE if required

### Water Tank

Water Tank provided FREE if required

### NBN / Fibre Optics

The home is to be provided NBN ready

*Note: All connection points to be within the boundary of the home. Telephone and electricity consumer account opening fees not included.*

## COMPREHENSIVE WARRANTY PROTECTION

---

Includes a 10-Year Structural Warranty for peace of mind, plus a 3-Month Maintenance Period to address any minor issues after handover.

## PRICE LOCK PERIOD

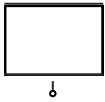
---

12-Month Price Hold from the date of initial deposit — protecting you from market volatility during the planning process.

# COMPLETE TURNKEY PACKAGE



Image for illustration purposes only. Actual Image may vary.



### Holland Blinds

Block out roller blinds with metal chain and Vibe Block (design specific) to all standard sized clear glass windows and standard sliding door in Living/Meals area (excludes Laundry & wet areas)



### Flyscreens

Aluminium mesh flyscreens to all openable standard windows (up to 15) - powder coated colour to match window frames



### Clothesline

Fully installed fold down clothesline



### 900 Kitchen Appliances

Built-in 900mm cooktop, oven and 900mm rangehood in lieu of standard 600mm.



### Split System Airconditioning

3.5kw including isolation switch and condenser to be wall mounted to Living/Family area.



### Boundary Fencing

Boundary Timber fencing to 3 side of property including return and wing gate (1800mm High)



### Internal Paint

3 coat paint to all internal open area walls (excluding garage).



### Letterbox

Rendered letterbox to complete look of front garden.



### Colour In Concrete Paving

Driveway, porch and path to porch in (up to 35m<sup>2</sup>)



### Front and Rear Landscaping

Includes 2 mature trees plus 20 plants to front, 2 mature trees plus 10 plants to rear, compacted topping pathway around house, up to 40m<sup>2</sup> natural turf, mulch and pebbles. Block size max 400m<sup>2</sup>.

# INCLUDED FACADES

---



## ELEVATE

Elevate makes a confident statement with its bold angles and elevated finishes. Featuring strong vertical elements and a sleek, modern aesthetic, this facade is ideal for those wanting a premium, architectural feel from the street.

---

## PAVILLION

Inspired by open, airy architecture, the Pavillion facade combines bold horizontal lines with subtle layering. Its minimalist design and modern materials create a sense of lightness and space — perfect for a fresh, coastal or urban look.



## ELITE

The Elite facade blends clean lines with timeless sophistication. With its striking gable roof, natural textures, and understated palette, Aspen offers strong street presence while maintaining a relaxed, contemporary feel.

---



## BRIGHT

The Bright facade lives up to its name — clean, fresh, and full of natural charm. With its inviting tones and simple symmetry, Bright offers a timeless design that suits both growing families and first-home buyers alike.



# EXTERNAL COLOURS

## SILVER MIST

Tick box to select



Brick & Infills  
Putty



Roof Tiles  
Atura in Barramundi



Entry Door  
Woodland Grey



Render 1  
Surfmist



Render 2  
Shale Grey



Driveway  
Charcoal



Windows  
Woodland Grey



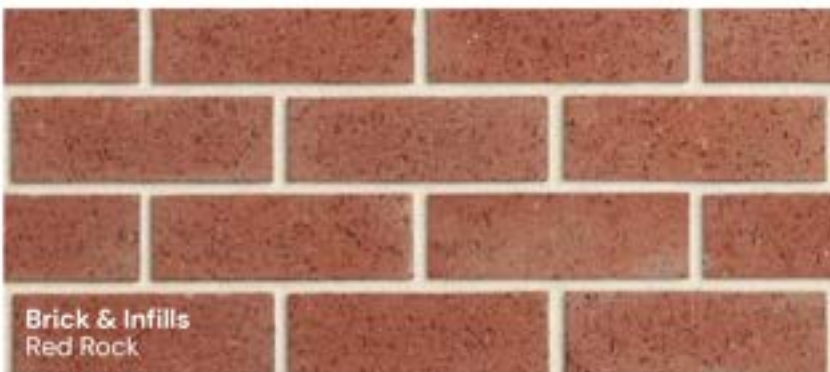
Garage Door  
Woodland Grey



Gutter, Fascia & Pipes  
Woodland Grey

## UMBER

Tick box to select



Brick & Infills  
Red Rock



Roof Tiles  
Atura in Barramundi



Entry Door  
Surfmist



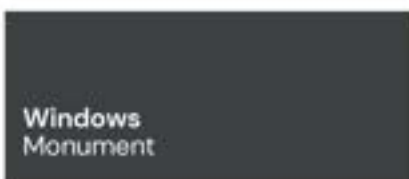
Render 1  
Surfmist



Render 2  
Evening Haze



Driveway  
Charcoal



Windows  
Monument



Garage Door  
Surfmist



Gutter Fascia & Pipes  
Monument

All images are for illustrative purposes only. Colour and shades of product may vary due to print and this document should be used as an example only.

# EXTERNAL COLOURS

## GUN METAL

Tick box to select



**Brick & Infills**  
Grey Nuance



**Roof Tiles**  
Atura in Barramundi



**Entry Door**  
Woodland Grey



**Render 1**  
Shale Grey



**Render 2**  
Woodland Grey



**Driveway**  
Charcoal



**Windows**  
Woodland Grey



**Garage Door**  
Woodland Grey



**Gutter, Fascia & Pipes**  
Woodland Grey

## COASTAL

Tick box to select



**Brick & Infills**  
Straw



**Roof Tiles**  
Colorbond Surfemist



**Entry Door**  
Surfemist



**Render 1**  
Woodland Grey



**Render 2**  
Surfemist



**Driveway**  
Charcoal



**Windows**  
Surfemist



**Garage Door**  
Surfemist



**Gutter Fascia & Pipes**  
Surfemist

All images are for illustrative purposes only. Colour and shades of product may vary due to print and this document should be used as an example only.

# INTERNAL COLOURS

## TAUPE

Tick box to select



## DRIFTWOOD

Tick box to select



All images are for illustrative purposes only. Colour and shades of product may vary due to print and this document should be used as an example only.

# INTERNAL COLOURS

## ASH STONE

Tick box to select



## OAK

Tick box to select



All images are for illustrative purposes only. Colour and shades of product may vary due to print and this document should be used as an example only.

# QUALITY SUPPLIERS



We're proud to work alongside some of Australia's most trusted and recognised brands to deliver high-quality homes for our clients.

